

**July 24-28, 2017**  
**Organizing Authority – Northumberland Strait Yachting Association**

**SAILING INSTRUCTIONS**

**1 RULES**

- 1.1 The race (for the purposes of the RRS, there will be four separate races, identified herein as “legs”) will be governed by the rules as defined in The Racing Rules of Sailing (RRS) 2017-2020.
- 1.2 The prescriptions of Sail Canada 2017-2020 will apply.
- 1.3 NStYA Category A Regulations as detailed in the Notice of Race will apply.
- 1.4 Container, ferry and cruise ship traffic have right of way. Any boat that interferes and found guilty, as noted in Sailing Instruction (SI) 13.5 could be assessed a disqualification (DSQ) for that leg.

**2 NOTICES TO COMPETITORS**

- 2.1 Notices to competitors will be posted at each NStYA member Yacht Club (YC).

**3 CHANGES TO SAILING INSTRUCTIONS**

- 3.1 Any change(s) to the SI will be posted at 0830 hours; same time as Skippers meeting on the day it will take effect.

**4 SIGNALS MADE ASHORE**

- 4.1 Signals made ashore will be displayed by flying flags from the flagpole located at each YC or in the case of Leg 3&4 in Cape John, from the Cape John Warf.

**5 SCHEDULE OF RACING**

- 5.1 Date Course Start / Finish Destinations

July 24	Leg 1	Shediac (PCYC) to Summerside (SYC)
July 25	Leg 2	Summerside (SYC) to Charlottetown (CYC)
July 26	Layover day	No racing for Strait Challenge (CYC has a Wednesday Night Race)
July 27	Leg 3	Charlottetown (CYC) to Cape John Warf (Barrachois BHYC)
July 28	Leg 4	Cape John Warf (Barrachois BHYC) to Pictou (PYC)

- 5.2 The scheduled time of the warning signal for each leg is as follows:

Leg 1 0955 hours - Shediac to Summerside  
Leg 2 0855 hours - Summerside to Charlottetown  
Leg 3 0955 hours - Charlottetown to Cape John (Barrachois)  
Leg 4 0955 hours - Cape John (Barrachois) to Pictou

- 5.3 July 26<sup>th</sup> is a layover day for the Strait Challenge.

**6 CLASSES**

- 6.1 Classes will be determined based on the NStYA rating cutoffs prior to the skippers meeting at 1830 hours on July 24th.
- 6.2 Classes will be SPINNAKER A, B, C and NON-SPINNAKER “D”
- 6.3 All pennants won, shall be flown when not racing.

## **7 RACING AREAS**

7.1 The waters of the Northumberland Strait, starting in Shediac, NB, proceeding to Summerside, PEI, Charlottetown, PEI, Barrachois, NS and finishing in Pictou, NS.

## **8 COURSES**

8.1 NStYA Strait Challenge skippers shall obey all navigational aids of the SI.

### **8.1.1 Leg 1 is 30 nm, Shediac to Summerside**

- a) The starting line for Leg 1 is will be between the Flag staff at the Pointe-du-Chêne Wharf and the PCYC start mark.
- b) After starting, competitors then must honour navigational marks XN22(Red), XN21(Green), XN20(Red), XN19 (Green), XN18 (Red), XN12 (Red) and round XN (Fairway Buoy) to starboard, then proceed to SYC.
- c) When approaching Summerside Harbour, competitors must round DE (Fairway Buoy) to port.
- d) Competitors then must honour the harbour navigational marks DE6 (Red), and DE8 (Red) keeping them to starboard.
- e) The finish line is located at SYC, between the Yardarm and the navigational buoy DE 18 (Red).

### **8.1.2 Leg 2 is approximately 45 nm Summerside to Charlottetown**

- a) The starting line is located at SYC between the yardarm and the navigational buoy DE 18 (Red).
- b) After starting, competitors then must honour the harbour navigational marks DE8 (Red), and DE6 (Red) keeping them to port.
- c) When leaving Summerside Harbour, competitors must round DE (Fairway Buoy) to port, then proceed toward CYC.
- d) Competitors must keep Tryon Shoals buoy (N14) to port.
- e) When approaching Hillsborough Bay competitors must round St. Peter's buoy (C1 Green) to port.
- f) When approaching Charlottetown Harbour competitors must round Spithead C5 (Green) and Blockhouse C7 (Green) to port.
- g) Competitors must honour all RED harboured navigational buoys, C8 (Red), C12 (Red), C14 (Red), rounding to starboard, then proceed to the finish line.
- h) The finish line is located at CYC between the Flag staff and the CYC Yellow Buoy.

### **8.1.3 Leg 3 is approximately 25 nm. Charlottetown to Cape John (Barrachois)**

- a) The starting line is located at CYC between the Flag staff and the CYC Yellow Buoy.
- b) After starting, competitors must honour all RED harboured navigational buoys, C14 (Red), C12 (Red), C8 (Red) rounding them to port.
- c) When leaving Charlottetown Harbour competitors must round Blockhouse C7 (Green) and Spithead C5 (Green) to Starboard, then proceed towards BHYC.
- d) When approaching Amet Island competitors may round from the east.
- e) Competitors must honour Amet Island Shoals UA2 (Red) keeping it to starboard.
- f) Once around Amet Island and entering Tatamagouche Bay, competitors will be heading for the finish line located off Cape John Warf.
- g) The finish line will be set up between a RC boat and the following coordinates.(TBA)

#### **8.1.4 Leg 4 is 30 nm. Cape John (Barrachois) to Pictou**

- a) The start line will be set up between the Cape John Warf and the orange inflatable Mark.
- b) After starting, competitors must honour Amet Island Shoals UA2 (Red) keeping it to Port, then proceed around Cape John and towards PYC.
- c) When approaching Caribou, competitors must keep Gull Rock SQ (Red), and Skinners Reef SQ2 (Red) to starboard.
- d) When approaching Pictou Harbour competitors must honour all navigational buoys, MacDonald's Reef SP6 (Red), Coles Reef SJ4 (Red), SJ6 (Red) and SJ7 (Green), then proceed to the finish line located at the PYC.
- e) The Finish line will be between the RC Flag Staff located at the PYC club house and the race mark #3. A spacer buoy will be used, all boats finishing must keep the spacer buoy between their boat and the RC flag staff.

#### **9 MARKS**

9.1 NStYA Strait Challenge will use Transport Canada navigational marks with the exception of start and finish marks at each member club.

#### **10 THE STARTS**

10.1 Skippers are to check in with the RC at each leg's skippers meeting.

10.2 The starting line is formed at each member club, between a flag staff, yardarm or RC boat and a start mark. Each member club will review the start location and procedure at the skippers meeting of each leg.

10.3 Legs will be started by using rule 26 with the following addition.

10.4 If separate starts are needed for each class, we will follow this order: Class D (Non-Spinnaker) will start first, followed by remaining classes. In order, Class - D, C, B, A.

10.5 Boats whose warning signal has not been made shall avoid the starting area.

10.6 A boat starting later than 30 minutes after her starting signal will be scored Did Not Start.

10.7 The RC may communicate general recalls, individual recalls or other information on VHF #68. Failure to broadcast or identify any boat on course side (OCS) will not be grounds for redress. This changes RRS62.1(a).

#### **11 THE FINISH**

**LEG 1** - at SYC between a Yardarm and the navigational buoy DE 18 (Red).

**LEG 2** - at CYC between the Flag staff and the CYC Yellow Buoy.

**LEG 3** - at BHYC between a RC boat and the following coordinates: (TBA)

**LEG 4** - The Finish line will be between the RC Flag Staff located at the PYC and PYC race mark #3. A spacer buoy will be used, all boats finishing must keep the spacer buoy between their boat and the RC flag staff.

#### **12 PENALTIES**

12.1 Boats failing to finish by the finish times indicated announced at the skippers meeting or 2000 hours for each leg will be scored a Did Not Finish, this changes RRS 35.

12.2 A boat scored OCS shall have 30 minutes added to her elapsed time by the Race Committee without a hearing.

12.3 A boat having made no attempt to satisfy the OSR requirements may be disqualified.

12.4 Boats in the vicinity of Northumberland Ferries Ltd, Cruise Ships or Commercial ships shall not impede their passage by steering a course converging or one that could cross ahead. Any interference reported will be interpreted as a serious breach of these instructions and a penalty could be assessed, up to DSQ.

### **13 PROTESTS AND REQUESTS FOR REDRESS**

13.1 Protest forms are available from the RC located at each YC. Completed protests shall be delivered there within the protest time limit.

13.2 The protest time limit is 30 minutes (exception - Barrachois / time limit extended to one (1) hour) after the last boat has finished or 2100 hours.

13.3 Jury deliberations will start no later than 2030 hours if boats are out to the finish time limit.

13.4 If a hearing involving potential prize-winners is not decided by 1800 hours, then the daily prize-giving for the affected class will be held over till the next night.

### **14 SCORING**

14.1 Results will be calculated within each class.

14.2 A daily calculation will be done for overall fleet (Spinnaker and Non-Spinnaker classes combined) placement. The overall placement is calculated based on corrected times using the entire fleet. The total four leg calculations (positions) will be added together for the final overall position standings for the NStYA Strait Challenge.

### **15 SAFETY REGULATIONS**

15.1 A boat that retires from a leg shall notify the RC as soon as possible on VHF #68.

### **16 EQUIPMENT CHECK**

16.1 A boat may be inspected at any time for compliance with the NOR and SI.

### **17 TRASH DISPOSAL**

17.1 RRS #55.

### **18 PRIZES**

18.1 Prizes will be given as follows:

a) Leg 1, 2, 3 & 4

- 1st, 2nd and 3rd place NStYA pennants awarded in each class.
- An award sponsored by Stright MacKay will be presented to 1<sup>st</sup> place of each class.
- Overall winner for fleet placement announced, first overall will be presented the NStYA Black Flag.

b) Overall Fleet Placement

- An overall first place prize sponsored by Stright MacKay and the NStYA Strait Challenge Black Flag will be awarded to the winners in entire fleet placement.
- Overall NStYA Strait Challenge winner will be presented to the winner based on entire fleet placement using corrected times. These placements will be combined from the four legs.

c) Shediac - Charlottetown and Charlottetown - Pictou Placement

- There will be an overall winner of the NStYA Shediac - Charlottetown and Charlottetown - Pictou Races. This will be presented to the boat with the combines lowest points in Leg 1&2 (Shediac to Charlottetown) and 3&4 (Charlottetown to Pictou).

## 19 DISCLAIMER OF LIABILITY

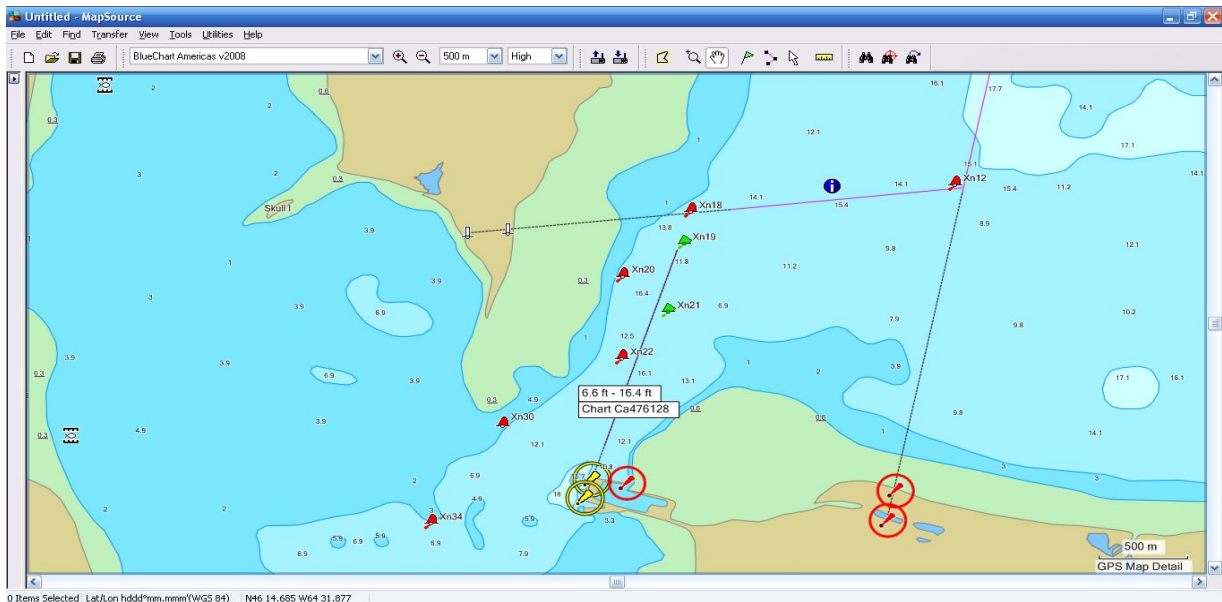
19.1 Competitors participate in the regatta entirely at their own risk. See RRS 4. The Organizing Authority (OA) emphasizes that competitors participate in “NStYA Strait Challenge” entirely at their own risk. Responsibility for the safety of each vessel and crew and the decision whether to start a race or to continue racing ultimately rests with the skipper. The OA will not accept any liability for material damage or personal injury or death sustained in conjunction with or prior to, during, or after the “NStYA Strait Challenge” event.

## 20 INSURANCE

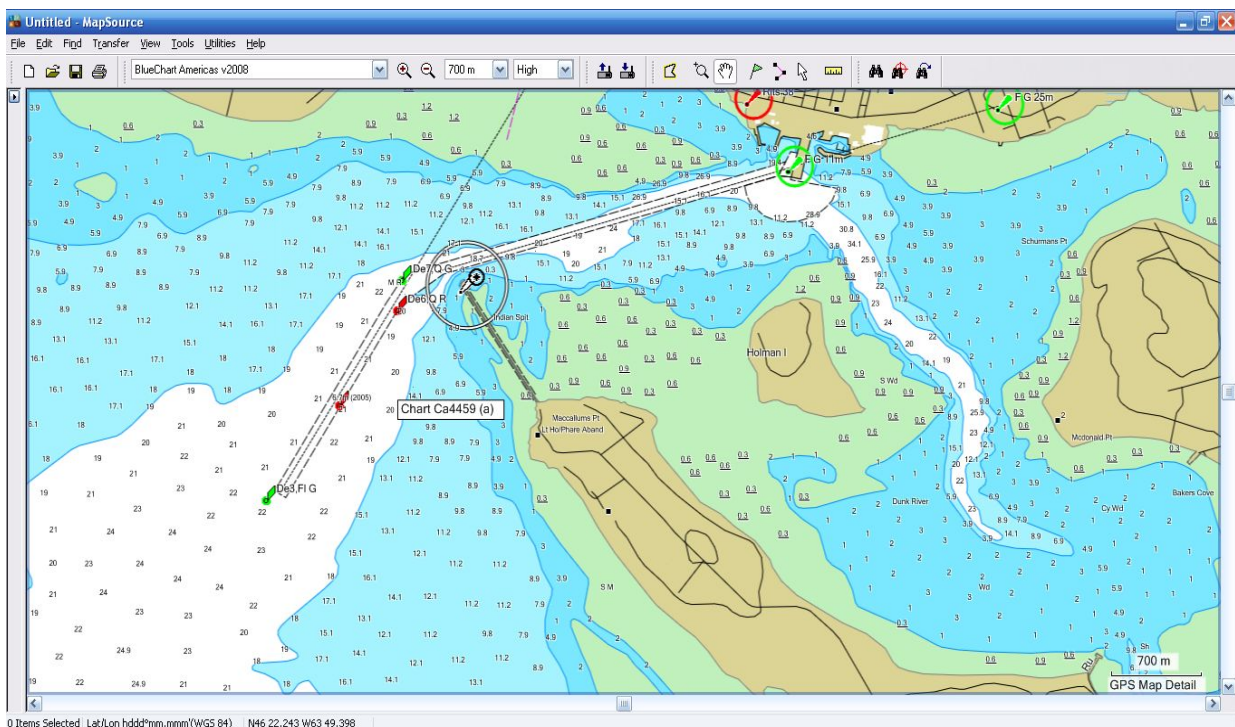
20.1 Each participating boat shall be insured with valid third-party liability insurance with a minimum cover of \$1,000,000.00 CAN or US.

Please be advised the following charts are not for navigational purposes and are not to scale

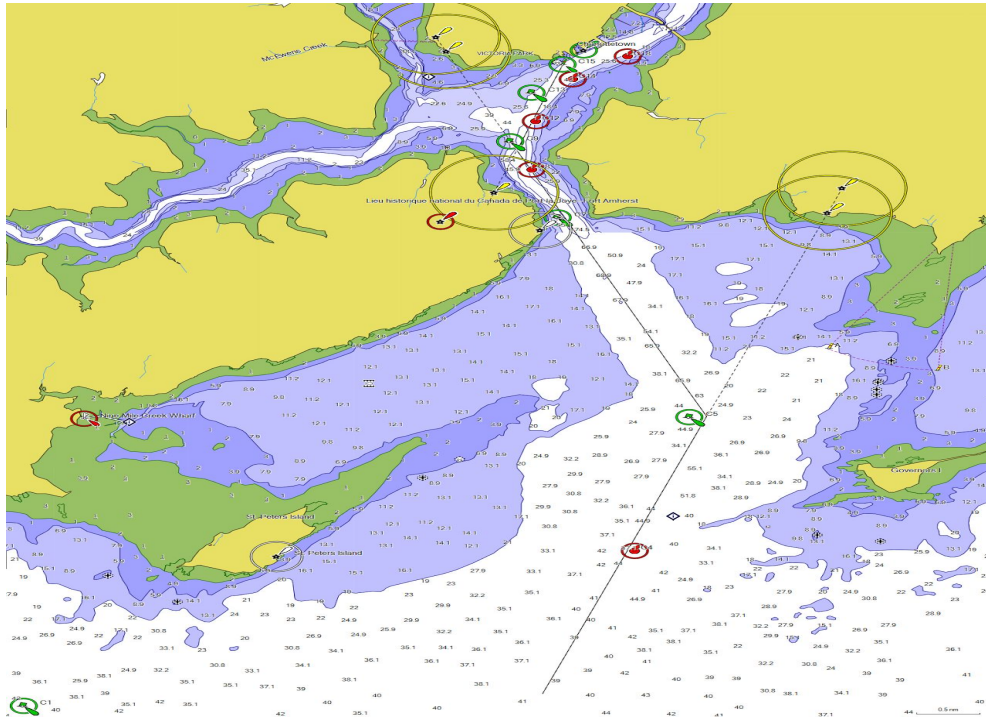
Shediac Bay



Summerside Harbour



# Charlottetown Harbour



# Barrachois / Amet Sound

